

Newsletter

January 2021



St Marychurch Pre-school

Website: www.stmarychurchpreschool.co.uk

Email: preschoolstmarychurch@gmail.com



Find us on Facebook
[stmarychurchpreschool](https://www.facebook.com/stmarychurchpreschool)



www.torbaysafeguarding.co.uk

nspcc.org.uk

Welcome back – we hope you all enjoyed the Christmas holidays and a Happy New Year.

This term we are looking at the following:-

Letter sounds

Week 1	Past	g
Week 2	Present	o
Week 3	Friendship	u
Week 4	Physical	l
Week 5	How and why questions	f
Week 6	Chinese New Year	b

All Nursery rhymes will be using Makaton signs.

The Gingerbread Man will be for our story mapping and in the role play area.

Dates for your diary:-

24.2.2020 - Committee meeting

Term dates:

Monday 4 January to Thursday 1 April 2021

Half term Monday 15 February to Friday 19 February 2021

Monday 19 April to Friday 16 July

Half Term Monday 31 May to Friday 4 June 2021

Wanted: felt tips and food colouring.

Self-help skills – zips on coats. Talking about feelings and emotions.

Website: www.foundationyears.org.uk

Information on the EYFS framework followed by Pre-school.

Garden – If your child also wears wellies to pre-school can they please have a change of shoes to wear in the classroom. Thank you.

School Admissions – remember the last day to apply for school admissions is **Friday 15 January 2021.**

EYPP Funding – for some children we are able to claim a further 53p per hour funding and for this we are asked to purchase items or provide support that will benefit the children and then evaluate the outcome. Last term we bought sensory items.

Christmas raffle - Unfortunately we were unable to hold our usual Christmas Morning this year but a thank you to everyone who participated in the raffle event organised by the committee. We raised **£40.** We are hoping to put the money towards card and paint materials for our craft sessions and plastic wallets for starting up our library system again.

End of term reports – please remember to update us with your child's current interests and add any comments to the bottom of their report. If you have trouble accessing Tapestry or have any questions or areas of concerns please let us know.

Existing Injury It is important for you to tell us about any existing injury your child has when they arrive at pre-school each morning, so that we can fill in the necessary form and also so that we can monitor your child during the morning should they become unwell or if they knock themselves in the same place.

Updates If changes have been made to your address, telephone, or contact details then please ensure your registration records are changed too.

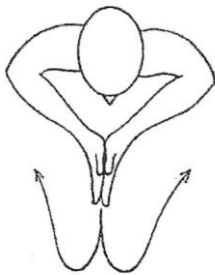
Newsletter - just to remind you the newsletters are sent out at the beginning of each half term by email with dates of events to be held.

Library books - We are going to purchase some plastic wallets to be able to resume are library system. We shall sanitise and quarantine the books from the bag. We do have a large number of books to share. We were also thinking of having a Reading Challenge and love you to get involved.

Lastly, If you have any other ideas or suggestions for the Pre-school please let us know.

Makaton signs - (also see noticeboard)

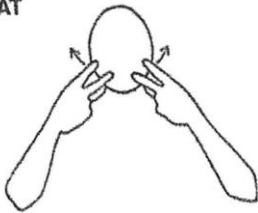
TO SWIM
(see video for examples of use)



TO JUMP



CAT

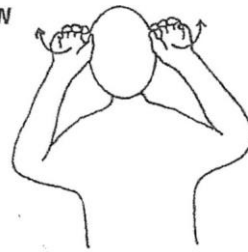


HORSE

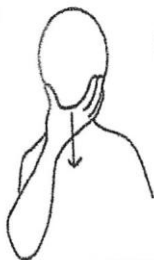


Mime movement on the spot - twice only

COW



MAN



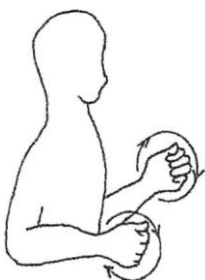
Stroke beard

LADY/WOMAN



Straight finger moves diagonally to the corner of the mouth

mouth

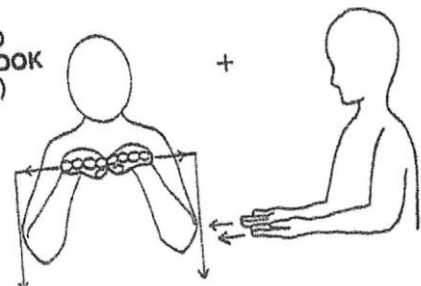


TO EAT (1)



Tap lips twice with emphasis

TO COOK (3)



TO